

# Handheld Scanner SLAM 1000

Entry-level solution for professional high-precision mapping

**SLAM1000** is a reliable tool for surveying, mining and BIM modelling. Complex projects become easier to deliver, while results remain consistently precise.

The compact handheld SLAM1000 3D scanner sets new standards in speed and data quality for reality capture. High accuracy, true-colour visualisation and complete freedom of movement are now combined in a single device.

## KEY FEATURES

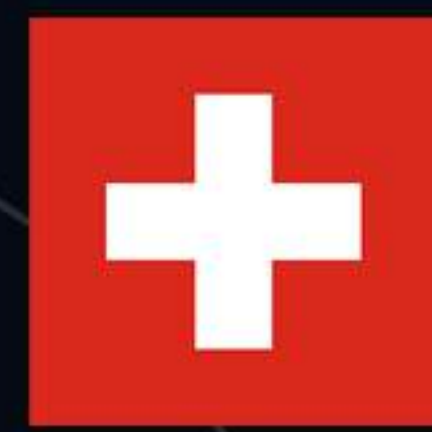
- Industrial-grade SLAM algorithms and a precision IMU module ensure exceptional detail and accuracy
- Instant results – monitor digital twin generation in real time during scanning
- 12 MP panoramic camera delivers vivid and accurate colour reproduction at pixel level
- Support for 3D Gaussian Splatting – create highly realistic 3D scenes using external panoramic cameras
- MagSafe mounting – attach your smartphone in a single motion
- Complete system in a single case, smaller than an A4 sheet



TOPODRONE SA  
+41 21 588 02 11  
info@topodrone.com  
topodrone.com  
Rue de la Gare 13,  
1820 Montreux,  
Switzerland



**TOPODRONE**  
AFFORDABLE ACCURACY



# SLAM 1000 Specifications

Device Weight	0.65 kg (scanner only) 1.16 kg (with battery and base)
Dimensions	283.8 × 173.8 × 170 mm (with battery and base)
Power Consumption	18 W
Storage	512 GB SSD
Battery Type (Lithium battery)	SP30 lithium battery
Operating Time (per battery)	up to 102 minutes per battery
Operating Temperature	-20°C to +50°C
Humidity	<95% (non-condensing)
Ingress Protection Rating (IP Rating)	IP54

## LiDAR Sensor

Wavelength	905 nm
Laser Class	Class 1
Range	0.1-70 m
Field of View (FoV)	360° (horizontal) / -7° to +52° (vertical)
Point Rate	200,000 points/s (200 kpts/s)
Scan Rate	10 Hz

## Camera

Resolution per Camera	12 MP
Field of View (FoV)	360° (horizontal) / -7° to +52° (vertical)

## High-precision IMU

Bias Stability	3°/h (industrial-grade)
Angular Random Walk (ARW)	0.1°/√h

## Interfaces & Connections

Type-C1	SSD   Charging
Wi-Fi	Supported
Bluetooth	Supported

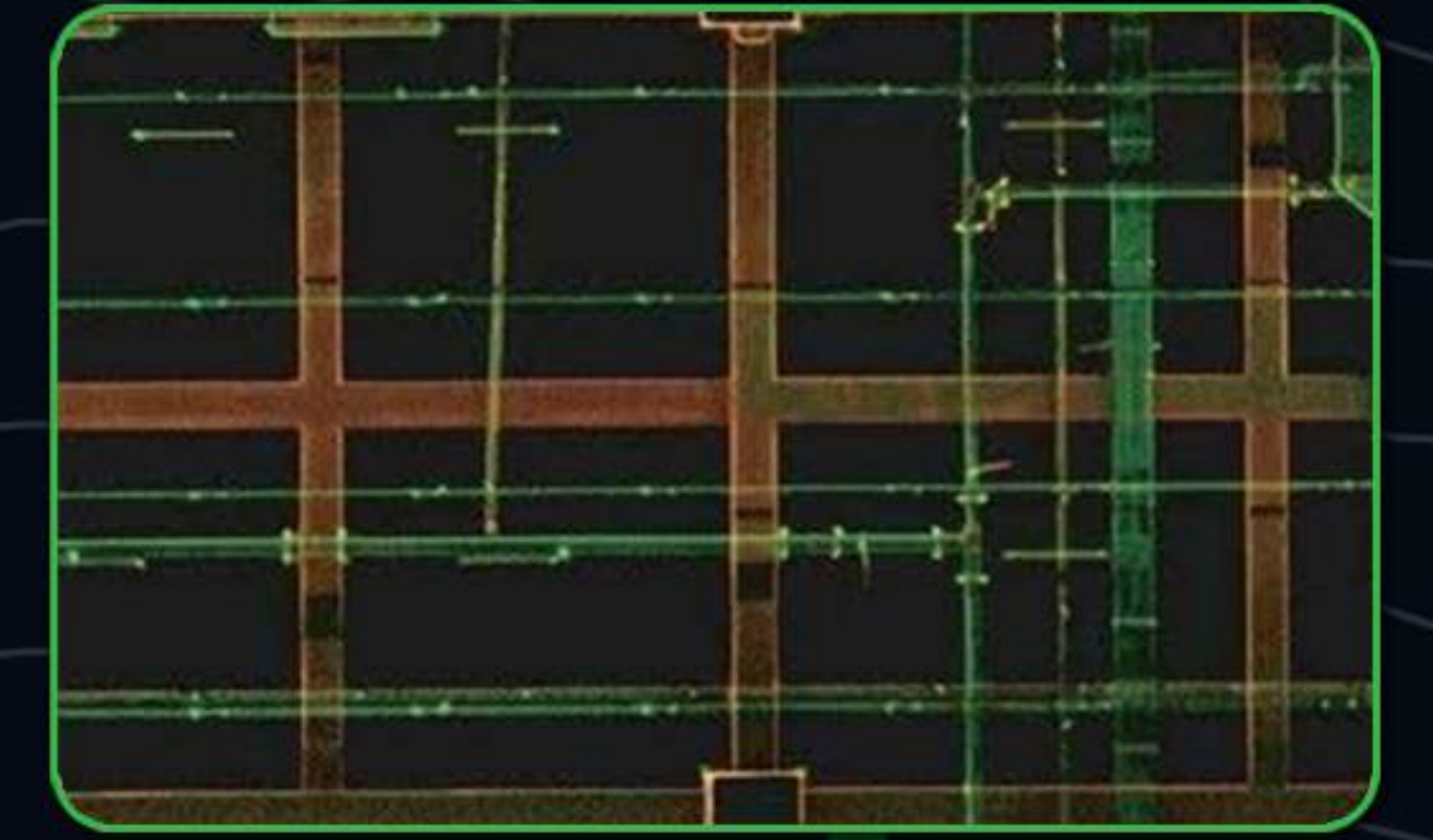


TOPODRONE SA  
+41 21 588 02 11  
info@topodrone.com  
topodrone.com  
Rue de la Gare 13,  
1820 Montreux,  
Switzerland

# SLAM 1000 Advantages

## High-precision point cloud

The system is equipped with a non-repetitive scanning LiDAR and a high-precision inertial measurement unit (IMU), utilising industrial-grade SLAM algorithms to generate highly accurate point clouds.



## Colourised point cloud

The 12 MP panoramic camera generates high-resolution colourised point clouds with highly realistic and detailed colour reproduction.



## Real-time mapping

Enables real-time point cloud acquisition, delivering ready-to-use results immediately after data capture.



## MagSafe Mounting

The integrated MagSafe magnetic ring enables quick and convenient smartphone mounting.



## External panoramic camera

Supports external panoramic camera integration and 3D Gaussian Splatting generation.



## Lightweight and portable

Case dimensions: 189 × 232 × 115 mm (smaller than an A4 sheet), ensuring convenient transport and enhanced portability.





**TOPODRONE**  
AFFORDABLE ACCURACY



# SLAM 1000 Component Overview

LiDAR

Panoramic camera

MagSafe magnetic ring

Battery grip



TOPODRONE SA  
+41 21 588 02 11  
info@topodrone.com  
topodrone.com  
Rue de la Gare 13,  
1820 Montreux,  
Switzerland



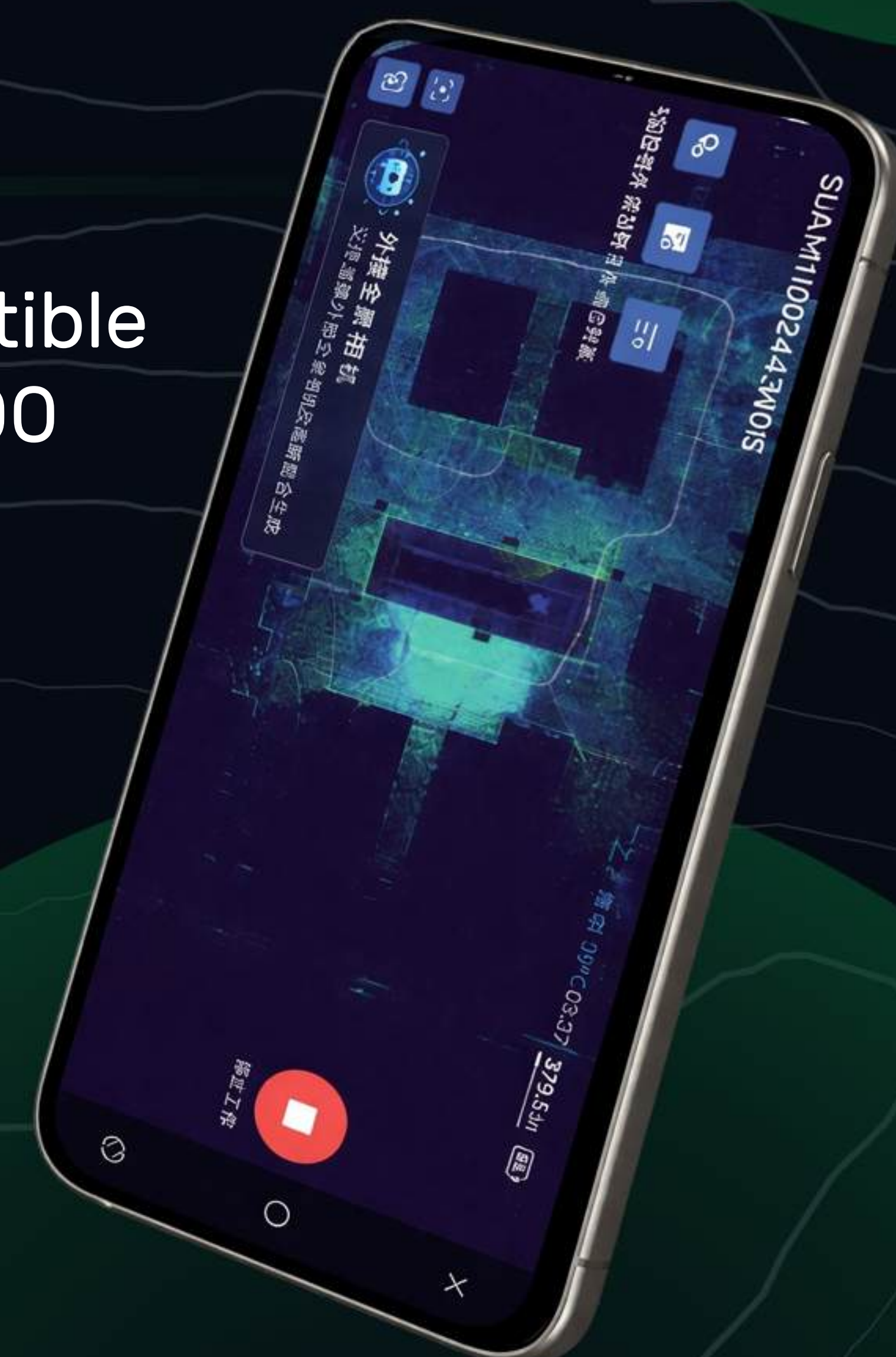
# Software

## SLAM GO App

SLAM GO is a data acquisition application for handheld laser scanners, compatible with Android and iOS devices. It provides a stable connection to the SLAM 1000 via Wi-Fi or, when required, over a mobile network. SLAM GO offers intuitive control of both the device and projects, along with powerful functionality for data acquisition and processing.

### Functions:

- Device control and configuration
- Project management
- Real-time data capture, visualisation and navigation
- CORS configuration and connectivity
- Real-time data streaming over the internet and additional features



## SLAM GO POST Pro

SLAM GO POST Pro is a PC-based software package supplied with the handheld laser scanner. It supports post-processing of data collected by the SLAM 1000, enabling the generation of high-precision, high-resolution coloured point clouds and geo-referenced panoramic imagery. In addition, it provides tools for point cloud visualisation and optimisation.

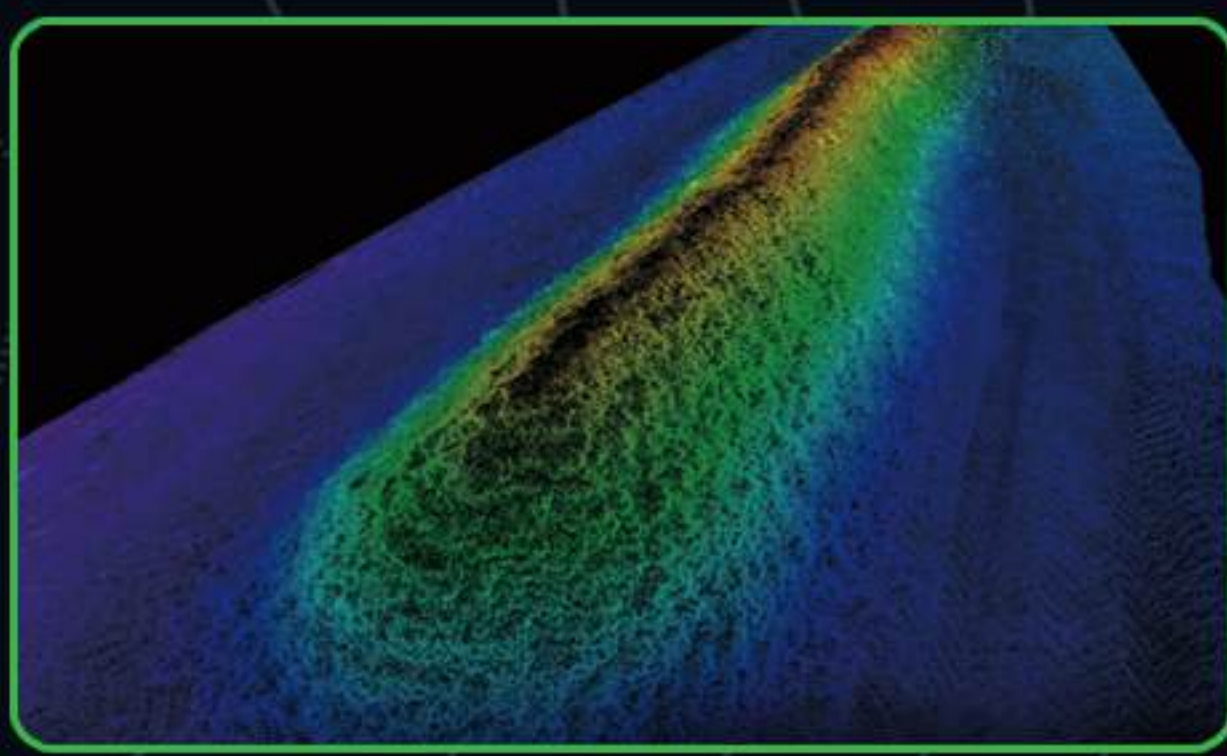
### Functions:

- Processing data from the handheld laser scanner
- Point cloud visualisation and dataset review
- Point cloud colourisation, panoramic image generation and 3D Gaussian Splatting (3DGS)
- Resume scanning from the point of interruption



# Applications of SLAM 1000

## Surveying and mapping



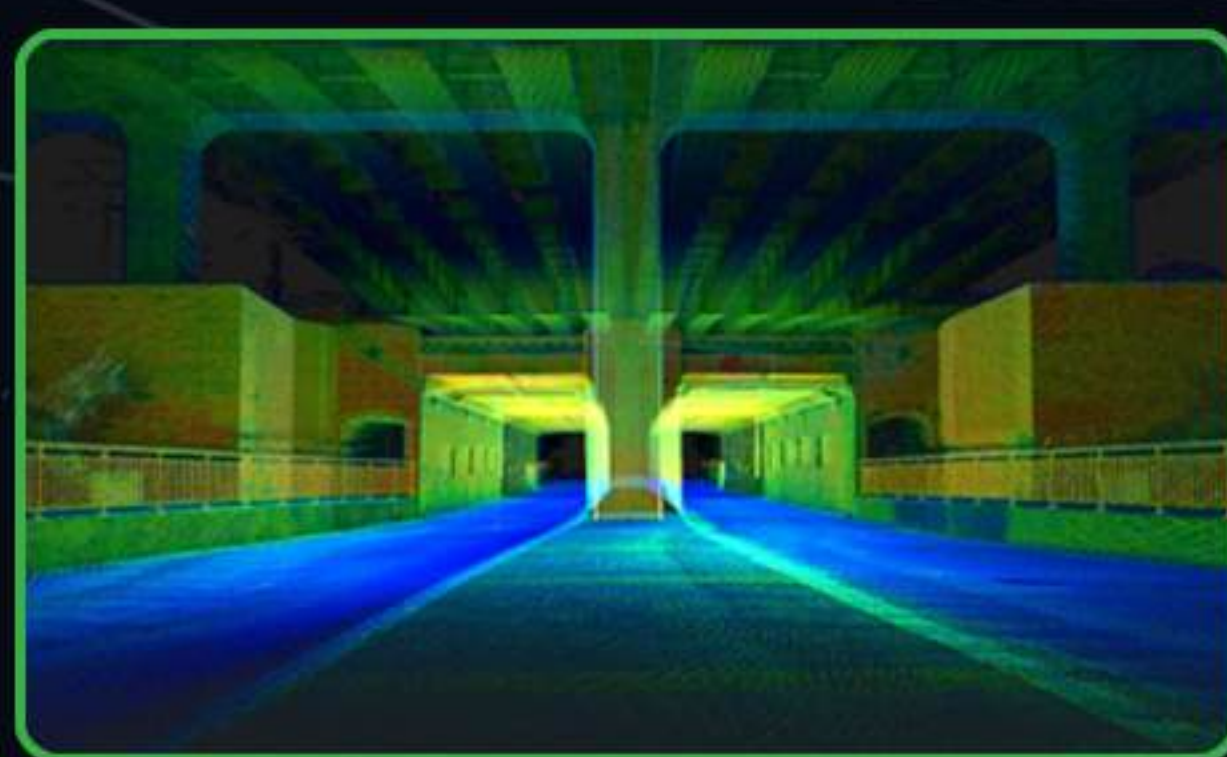
- Rapid topographic surveying of large areas
- Mapping in GNSS-denied environments
- Data capture in hard-to-reach environments (tunnels, forests, built-up areas)

## Construction and infrastructure



- As-built surveys of construction sites, roads and utility networks
- Up-to-date 3D models for BIM and project control
- Support for planning and progress monitoring

## Industrial facilities and digital twins



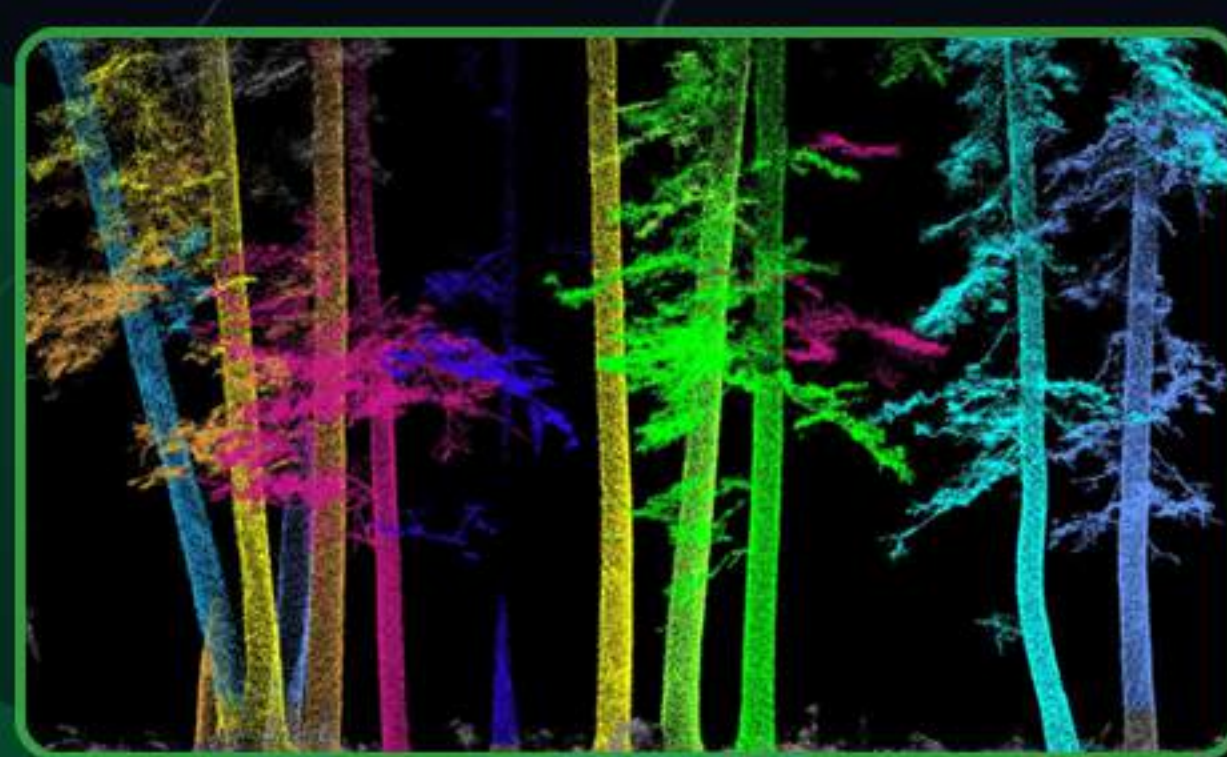
- Scanning of factories, warehouses and industrial facilities
- Digital models of equipment and layouts
- Asset inventory and management

## Mining and underground environments



- Scanning of mines, quarries and tunnels
- Rapid 3D visualisation of hazardous areas
- Fast data delivery for decision-making

## Forestry and environmental monitoring



- Mapping of forest areas and agricultural land
- Assessment of tree and vegetation parameters
- Monitoring of natural environments

