



**TOPODRONE**  
AFFORDABLE ACCURACY

# SLAM100

**MOBILE LASER SCANNER**

*with SLAM algorithms*



**TOPODRONE SLAM 100** is a mobile laser scanner with industrial grade SLAM algorithms. Equipped with a 360° x 270° rotating laser sensor. Allows you to receive a highly accurate three-dimensional point cloud without the use of GNSS data and in low or no light conditions.

The scanner has 3 cameras with 5 Mp each and a combined viewing angle of 200° x 100° to create panoramas and the point cloud coloring.

The device includes a scanning control system and a data storage system, as well as interchangeable batteries. You can start scanning immediately after turning on the device - with a single button.

The laser scanner comes with the SLAM GO mobile app to control real-time dense point cloud generation and field project management, while the desktop version of SLAM GO POST features post-processing, dense point cloud coloring, cloud stitching, previewing results, measurements and other features.

The new mobile scanner can be used not only for surveying, but also for indoor scanning, scanning of tunnels and mines, scanning of forests for forest inventory and other applications.

You can use the equipment in handheld mode, as well as on a backpack and on a vehicle.





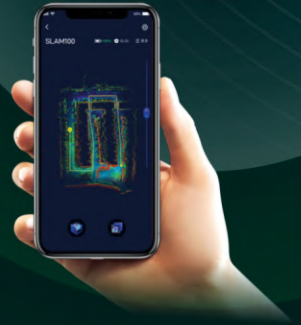
**TOPODRONE**  
AFFORDABLE ACCURACY

**SLAM 100**  
with SLAM algorithms

**FEATURES  
AND ADVANTAGES**



SLAM algorithms for non-GNSS operation, including indoors and tunnels.



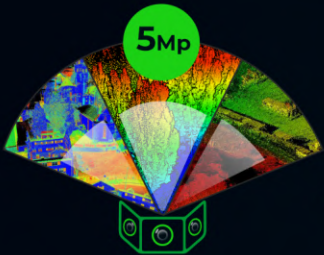
Mobile application to build a real-time point cloud.



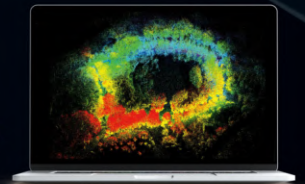
Data management and storage systems built into the scanner.



Backpack mount option for comfortable scanning.



Point cloud coloring with 3 built-in cameras.



LiDAR data post-processing software included.



Optional RTK module for high precision geo-referencing.



Data processing is performed on the workstation and not on the scanner itself, which increases processing speed.



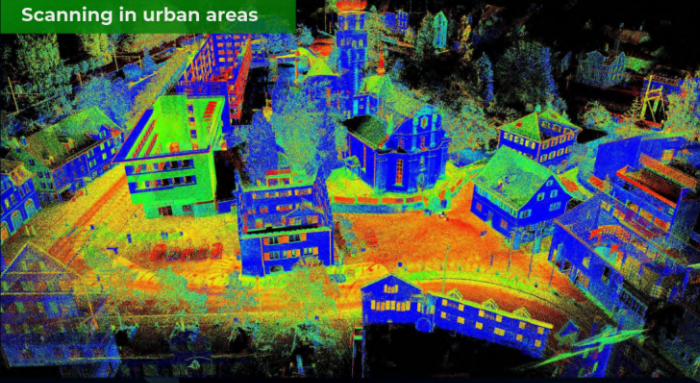


**TOPODRONE**  
AFFORDABLE ACCURACY

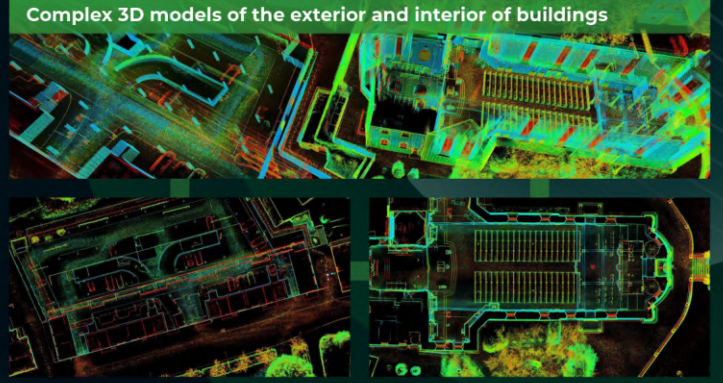
**SLAM 100**  
with SLAM algorithms

**FEATURES  
AND APPLICATIONS**

Scanning in urban areas



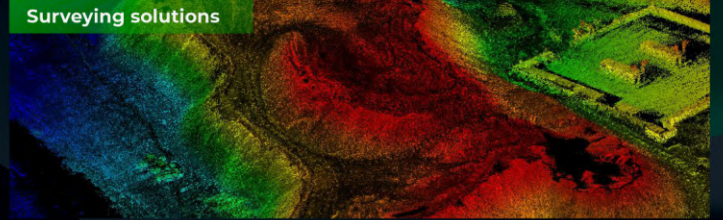
Complex 3D models of the exterior and interior of buildings



Obtaining models of multi-storied buildings



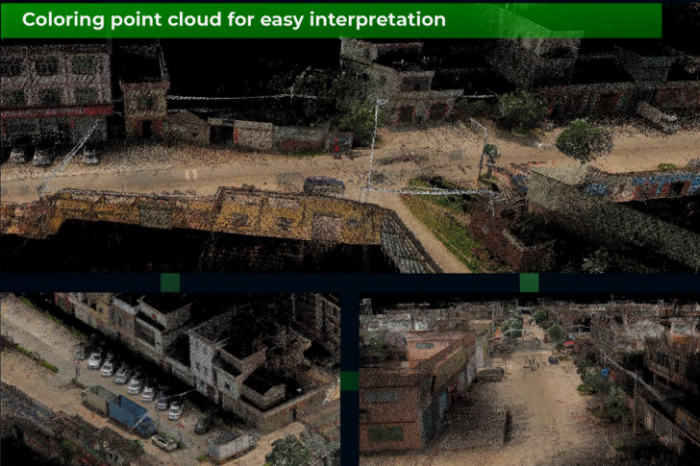
Surveying solutions



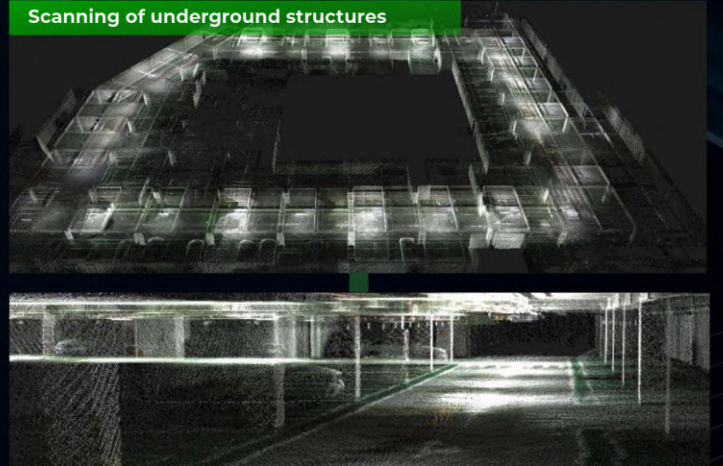
BIM models of industrial enterprises



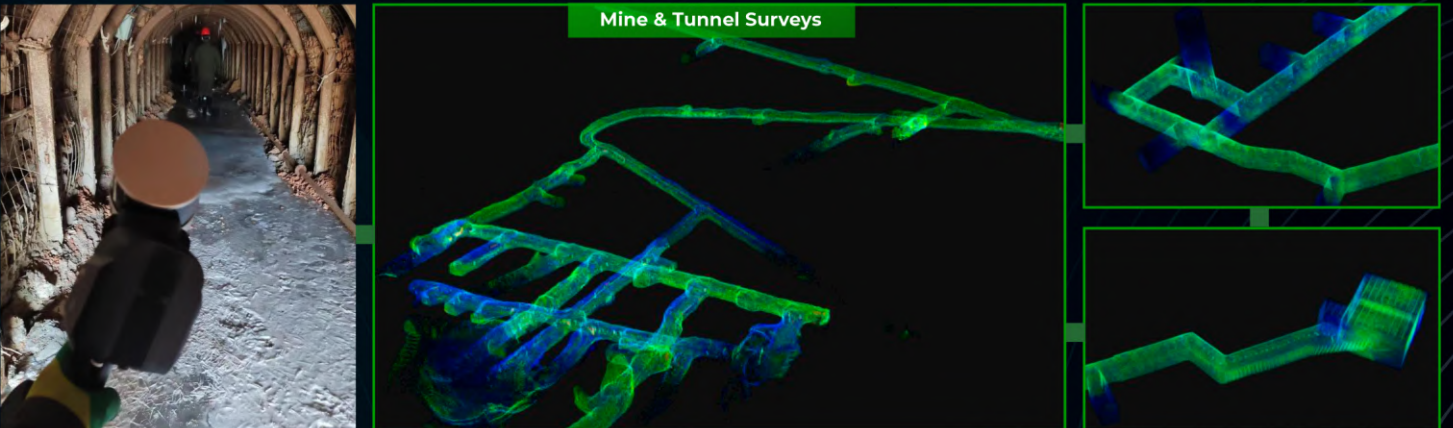
Coloring point cloud for easy interpretation



Scanning of underground structures



Mine & Tunnel Surveys



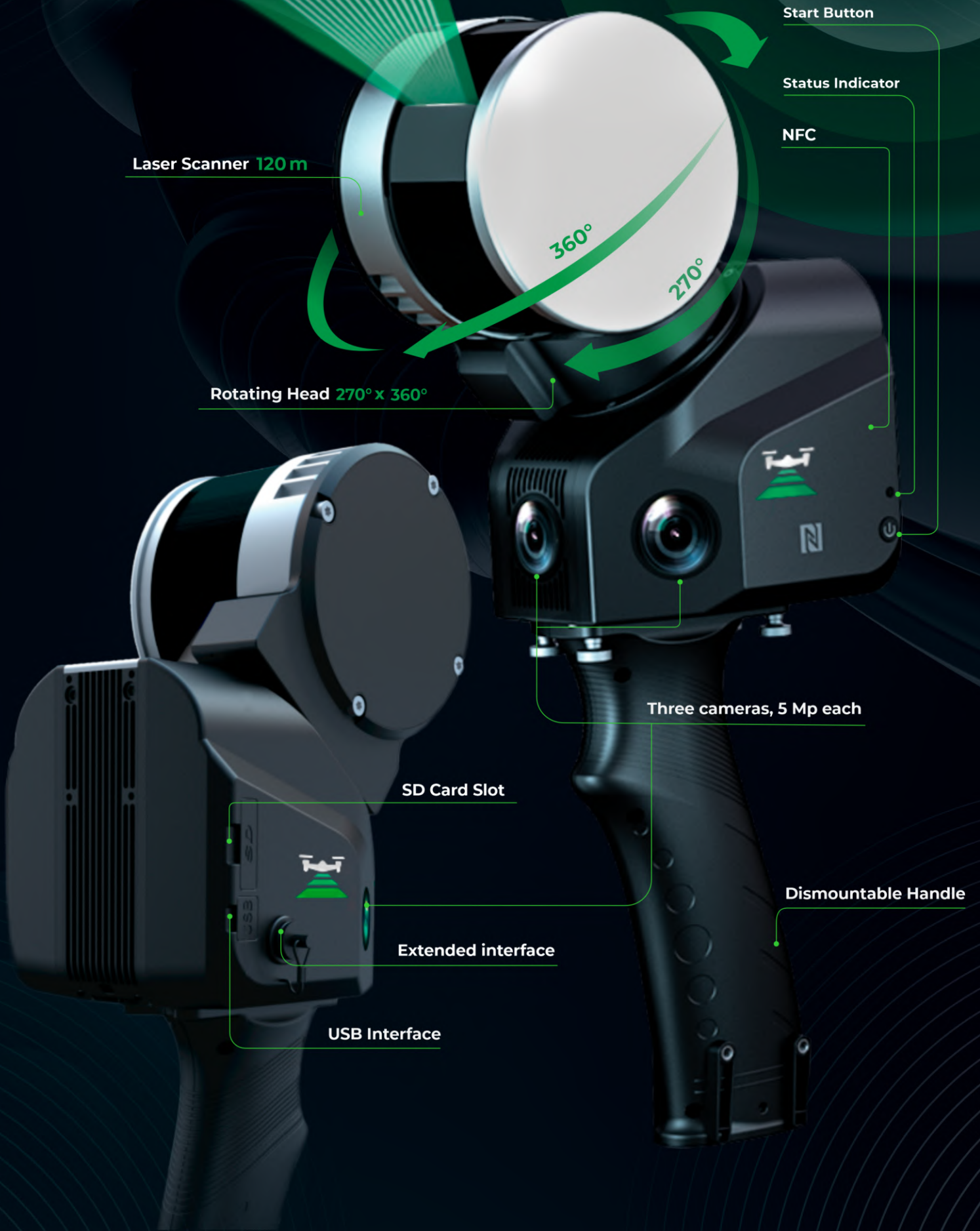




**TOPODRONE**  
AFFORDABLE ACCURACY

**SLAM 100**  
*with SLAM algorithms*

**LiDAR DESIGN**



Laser Scanner 120 m

Rotating Head 270° x 360°

Start Button

Status Indicator

NFC

Three cameras, 5 Mp each

Dismountable Handle

SD Card Slot

Extended interface

USB Interface





**TOPODRONE**  
AFFORDABLE ACCURACY

**SLAM 100**  
with SLAM algorithms

**LiDAR  
& ACCESSORIES**



## SPECIFICATIONS

Weight	1588 g	Sensor Accuracy	3-5 cm
Dimensions	372x163x106	Number of scanning beams	16
Operating temperature range	-10°C to 45°C	Horizontal FOV	360°
Sensor type	XT16	Vertical FOV	270°
Built-in cameras	Yes	Scanning frequency (single return)	320000
NFC	Yes	Refresh Rate	5-20 Hz
Replaceable battery	Yes	Laser Wavelength	905 nm
Battery capacity	3350 mah * 4	Number of cameras	3
Working Range	120 m	Camera Resolution	5 Mp

+41 21 588 02 11

topodrone.com

info@topodrone.com

@topodrone

